



**Charingfield**  
AGED CARE COMMUNITY



A welcoming community  
designed to *feel like home*



## Creating a true sense of home

*Charingfield is a boutique aged care community in Sydney's eastern suburbs focussed on supporting each of our residents to live their way, with grace and dignity.*

Our small houses feel like homes, our carers feel like family and our award-winning outdoor spaces provide the simple pleasures of a backyard. And just like home, our residents can create their own rewarding routine, enjoy our flexible approach to home-made meals, and continue to maintain valuable connections with their family, friends and the wider community. Most importantly, our residents feel secure knowing their privacy is respected, their independence is supported and their unique care needs are our highest priority.

Catering for both permanent aged-care residents and short-term respite guests, we offer generously sized suites and studio apartments each featuring an ensuite, kitchenette and balcony. One of our five small houses is dedicated to caring for residents with advanced memory care needs.

*Charingfield is proudly a small, tight-knit community. Our team looks after residents with the highest standards of care and they are genuinely focussed on supporting them to remain as independent as possible. We respect every resident's choices and wishes.*



**Laxmi Bhandari**  
Residential Service Manager, Charingfield



### Small house design

Our unique small house configuration offers a more personal and flexible living experience. The five individual houses contain just 10, 11 or 12 studio rooms, each with ensuite, that open onto a central kitchen, dining and lounge space. One house is secure and dedicated to caring for residents with advanced memory loss.



### Carers who know our residents well

Each Charingfield house has its own dedicated team of carers and there are nurses available 24 hours a day. This consistency of care enables strong bonds to form between carers, residents and their families. Our highly trained team is selected for their excellent clinical skills and their compassionate, dignified approach to caring for each resident.





### Award-winning backyard

Charingfield boasts some of the most beautiful gardens in the local area. Bursting with colour, fragrance and vegetables all year round, they recently won the Mayor's Award for the positive impact they've had on our community. Our residents love strolling through the walkways, and even doing some planting of their own.



### Flexible approach to home-made meals

When it comes to food, there's plenty of choice – just like home. Our daily menus are designed to offer lots of fresh, delicious, dietician-approved options that are made in our own kitchen. Residents can share a meal with others in their house's dining room, or we can serve meals in their private suite at a time that suits them.



### Supporting residents to live their best life

We focus on helping residents maintain their interests and connection with friends, family and the community. Residents can choose to join in Charingfield's range of activities and outings, like concerts, barbeques or trips to favourite local landmarks. There's an on-site hairdresser and visitors are always welcome – even pets!



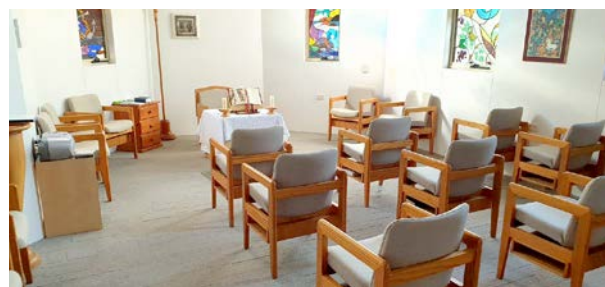
### Respite care offers families short term relief

Charingfield offers short-term aged care in our studio suites. This can provide much needed support for families caring for their loved one at home, especially at holiday times or when they are recovering from an illness or injury and require additional care. Many of our respite guests enjoy their stay so much, they transition to become a permanent resident.

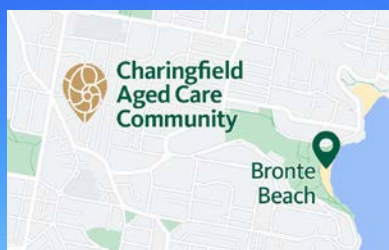


# A foundation for caring with grace

Charingfield was built by the Christian Brothers in 1993 on a foundation of compassion, grace and inclusivity. This ethos continues to permeate through everything we do, and every interaction we have with our residents and each other. All residents are welcome to visit our beautiful on-site Chapel for regular services or private reflection.



## A private oasis in Sydney's eastern suburbs



Charingfield is located in the leafy suburb of Waverley. Situated just a short drive from the beautiful Bondi, Bronte and Tamarama beaches, Charingfield occupies a beautifully secluded position in the much-loved part of Sydney. It has excellent proximity to other familiar landmarks including Queens Park and Centennial Park and is close to cafés and shopping centres.



## Live your way with dignity

Private suites with their own ensuite are available in both permanent and respite aged-care, including in our secure dementia household. Our room prices range from \$802,000 to \$1,123,000. Find out more about our special community by visiting our website and following us on Facebook.



**Free Aged Care Guide** available on our website

### Contact our friendly team

**P** (02) 9369 5444 **E** [info@charingfield.org.au](mailto:info@charingfield.org.au)  
282A Bronte Road, Waverley NSW 2024  
**W** [charingfield.org.au](http://charingfield.org.au)

Charingfield is proud to be part of:

